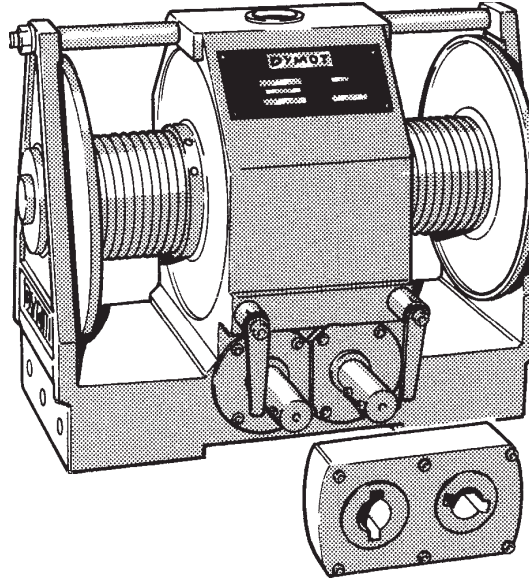




## MODEL DD800W WINCH



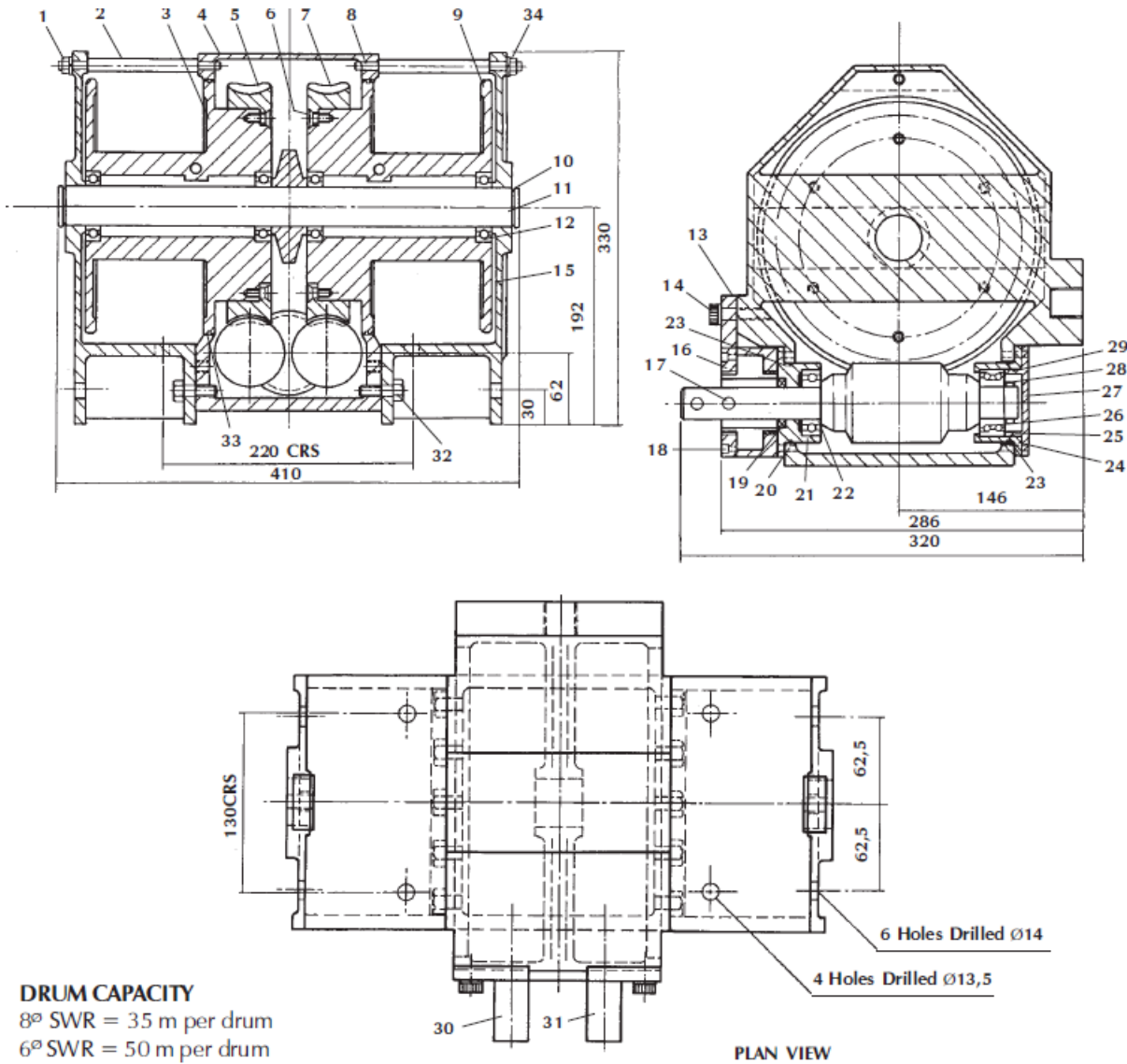
This winch has been specifically developed for servicing high mast lighting systems. It is used for lowering the lights down the mast for all servicing requirements.

High factors of safety and top grade materials ensure reliability and safety for years.

The winch has a number of unique features which make it a leader, namely:

- **INDEPENDENT DRIVES** for each drum which allow rope equalising at any time by simply removing the splitter gearbox from the two input shafts, doing the necessary adjustment, replacing the splitter gearbox and continuing the operation.
- **SELF SUSTAINING** worm gear drives which offer maximum safety and load control.
- **DOUBLE ROPES** from the independent drums give maximum safety through load sharing thus allowing the winch to be used to hoist men up the mast for maintenance purposes. (Permission for man hoisting must be obtained from the factory inspector).
- **GROOVED DRUMS** with undercut flanges facilitate even rope laying which gives best rope life and helps ensure that the ropes will share the load once they have been leveled.
- **POWER TOOLS** such as construction type drilling machines can be used to raise and lower the load. A reversible drive is not required as by using the power drive on the different input shafts the direction of rotation of the drums is reversed through the splitter gearbox.
- **PORTABILITY** has been achieved through extensive use of aluminium castings to keep the weight to a minimum.
- **GREASE FILLED** work gear housings ensure years of maintenance free duty.
- **TEST CERTIFICATES** are issued on all Dymot Winches in accordance with our program to build winches to BS 3701.
- **QUALITY ASSURANCE** methods which are based on SABS 0157 ensure that records and traceability of materials and components are maintained for years.

# GENERAL ARRANGEMENT



**DRUM CAPACITY**  
 8<sup>ø</sup> SWR = 35 m per drum  
 6<sup>ø</sup> SWR = 50 m per drum

PLAN VIEW

Item No.	Part No.	Dwg. No.	Description	Qty	Item No.	Part No.	Dwg. No.	Description	Qty
1			NUT, Hex, M10	2	18			SCREW, Soc hex Hd, M6 x 15	6
2	2454-2	2456	SPACER, Tie Rod, 99 lg	2	19			SEAL, Oil (SM2S387)	2
3	2454-4	2456	DRUM, LH	1	20			SCREW, Csk Slot Hd, M6 x 10	8
4	2634-4	2625	FRAME, Main	1	21	2454-20	2456	RETAINER, Bearing	2
5	2454-6	2463	GEAR, Worm - LH	1	22			BEARING (62052RS)	2
6			SCREW, Csk Slot Hd, M8 x 20	12	23			O-RING, ID60 x 2,0 Section	4
7	2454-29	2453	GEAR, Worm - RH	1	24	2454-25	2456	HOUSING, Bearing	2
8	2454-8	2456	ROD, Tie, Dia. 10 x 145 lg	2	25			SCREW, Csk Slot Hd, M8 x 20	8
9		2456	DRUM, RH	1	26			BEARING (3205)	2
10			CIRCLIP, External, Dia. 35	2	27	2454-24	2456	RETAINER, Bearing	2
11	2454-12	2456	SHAFT, Main	1	28			LOCKNUT AND WASHER	2
12			BEARING (60072RS)	4	29			O-RING, ID48 x 2,0 Section	2
13	2454-14	2456	PAWL, Locking	2	30	2454-18	2456	SHAFT, Worm - LH	1
14			SCREW, Shoulder Soc Hex M10	2	31	2454-31	2456	SHAFT, Worm - RH	1
15	2634-15	2624	FRAME, Side	2	32			SCREW, Hex Hd, M10 x 25 lg	10
16	2454-16	2453	GEARBOX	1	33			O-RING, ID222 x 1,6 Section	2
17			PIN, Dia. 8 x 35 lg	2	34			WASHER, Spring	2

\* Specification is subject to change without prior notice

## DYMOT ENGINEERING COMPANY (PTY) LIMITED

11 DERRICK ROAD, SPARTAN, KEMPTON PARK, SOUTH AFRICA  
 P.O. BOX 404, EDENVALE, 1610  
 TEL: +27 11 970-1920  
 FAX: +27 11 970-1979

E-MAIL: [sales@dymot.co.za](mailto:sales@dymot.co.za)  
 WEB: [www.dymot.co.za](http://www.dymot.co.za)  
 Co Reg. No 1965/07008/07