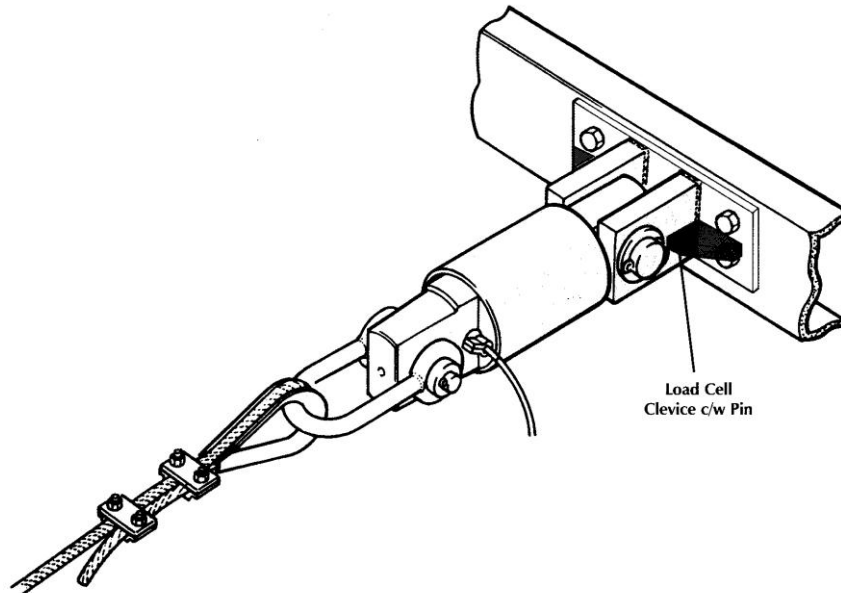




TWO-WIRE LOOP POWERED TENSION LOAD CELL TYPE CLLC-40, CLLC-80, CLLC-160



GENERAL INFORMATION

The Load Cell is rugged and ideal for conveyor tension control in underground environs. The Load Cell is strain gauge based and incorporates a microvolt-to-milliamp convertor. The Load Cell has only two connection wires (plus a screen). Apply 12 to 30 VDC to the +ve terminal and measure the current that flows out of the -ve terminal. Spare loop voltage permits external loop-powered tension displays. Transient protection is included. Three models are currently available.

FEATURES

- The true Two-Wire Loop Powered 4-20 mA Load Cell.
- Optional SABS I.S. Certification.
- No interface required for Load Cell.
- Transient/RFI integral protection.
- Simple, rugged and reliable.

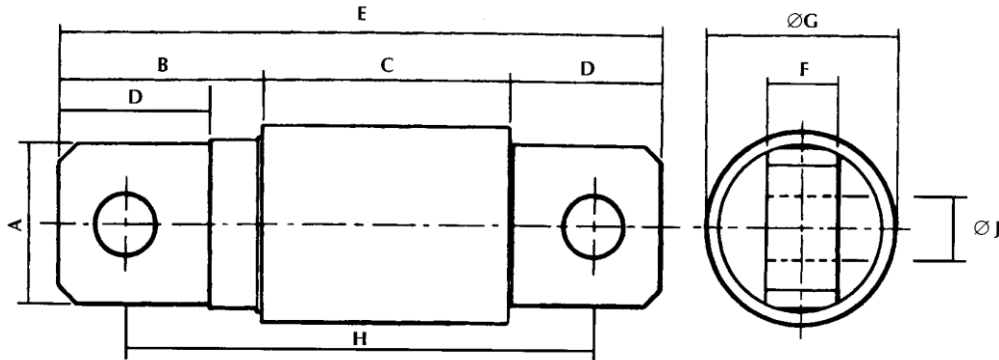
Supplied with Test & Calibration Certificate. 4 to 20 mA output signals.
Safety factor on ultimate breaking strain > 6.

APPLICATIONS

- Remote measurement.
- Portable equipment.
- PLC Systems.
- Instrumentation.

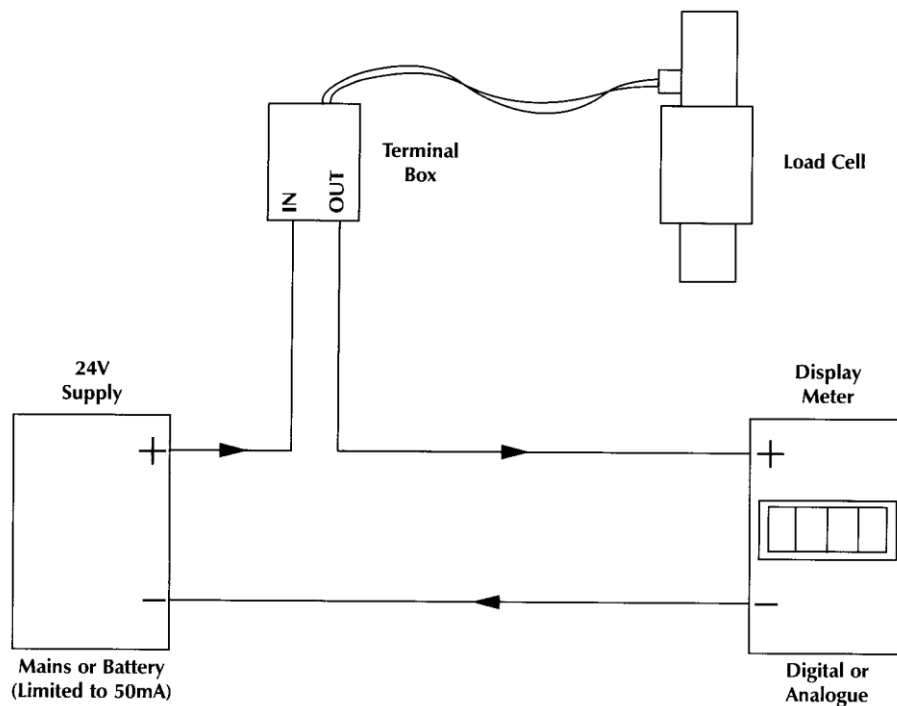
SPECIFICATION

Supply voltage range 12 to 36 VDC
 Max Load resistance.....@ 24VDC = 500 ohms
 Start-up current > 25 mA
 Accuracy 5% of full load
 Tension rating@4 to 20 mA
 Type CLLC-40 0 to 40 KN
 CLLC-80 20 to 80 KN
 CLLC-160 50 to 160 KN



TYPE	A	B	C	D	E	F	ØG	H	ØJ
CLLC 40-80	88	115	139	86	340	40	108	264	35
CLLC 160	98	130	139	100	370	50	120	270	45

2 WIRE LOAD CELL WIRING DIAGRAM



NOTE: Cable used is one pair overall screened, 0,5mm Square

DYMOT ENGINEERING COMPANY (PTY) LIMITED

11 DERRICK ROAD, SPARTAN, KEMPTON PARK, SOUTH AFRICA
 P.O. BOX 404, EDENVALE, 1610
 TEL: +27 11 970-1920
 FAX: +27 11 970-1979

E-MAIL: sales@dymot.co.za
 WEB: www.dymot.co.za
 Co Reg. No 1965/07008/07